



# ELK Biotechnology

CK7 Mouse mAb

Catalog NO.: EM1054

For research use only.

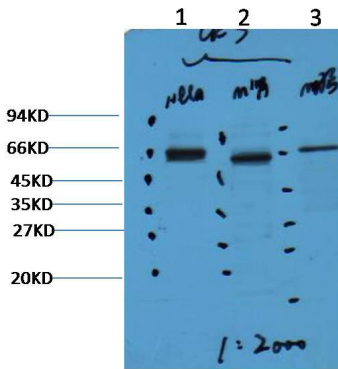
## Overview

---

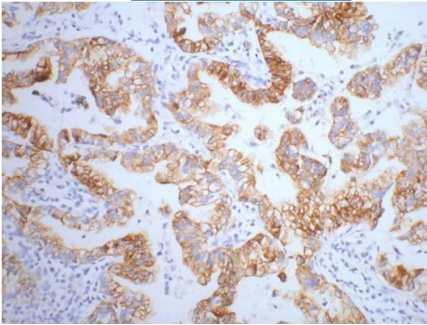
Product name	CK7 Mouse Monoclonal antibody
Source	Mouse
Applications	<b>WB IHC IP</b>
Species reactivity	<b>Human Rat Mouse</b>
Recommended dilutions	<b>WesternBlot:1/1000-2000</b> <b>Immunohistochemistry:1/200</b> <b>Immunoprecipitation:1/200</b> <b>NOTE: Optimal dilutions should be determined by the end user.</b>
Immunogen	Synthetic Peptide
Species	Human
Storage	PBS with 0.02% sodium azide and 50% glycerol pH 7.4. Store at -20° C. Avoid repeated freeze-thaw cycles.
Isotype	IgG1
Clonality	Monoclonal
Concentration	1 mg/ml
Observed band	<b>54kDa</b>
GeneID (Human)	3855
Human Swiss-Prot No.	P08729
Cellular localization	Cytoplasm
Alternative Names	Cytokeratin 7 K2C7 K7 keratin 7 KRT7 Sarcolectin SCL Type II keratin Kb7
Background	Cytokeratin 7 is a 54kD intermediate filament protein found in a variety of glandularepithelia. Cytokeratin 7 has been found in columnar and glandular epithelium of the lung cervix breast bile ducts and larger collecting ducts of the kidney. It is present in the transitional epithelium of bladder as well as ovarian and lungepithelia and occasionally staining of blood vessel cell walls particularly endothelial cells may be observed. However Cytokeratin 7 is not

expressed by epithelial cells of the gastrointestinal tract colon or prostate. Keratin 7 is often co expressed with keratin9.

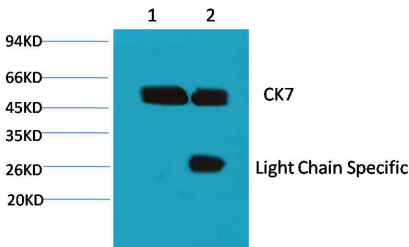
Western blot analysis of) Hela 2) Mouse Kidney 3) Mouse Brain with CK7 mAb diluted at:2000.



IHC staining of human lung cancer tissue with CK7 mouse mAb(12D7) diluted at:200.



1、 Input: Hela Cell Lysate 2、 IP product: IP dilute:200 Western blot analysis: primary antibody : EM1054:1000 Secondary antibody: Goat anti-Mouse IgG Light chain specific(S003):5000



Western blot analysis of extracts from MCF-7 (Lane) Mouse Kidney (Lane 2) Rat Kidney (Lane 3) using CK7 diluted at 1:2000.

