



# ELK Biotechnology

CK16 Mouse mAb

Catalog NO.: EM1056

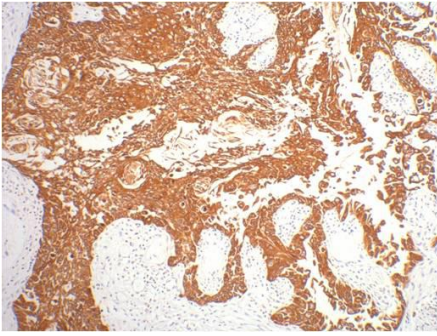
For research use only.

## Overview

---

Product name	CK16 Mouse Monoclonal antibody
Source	Mouse
Applications	IHC
Species reactivity	Human Rat Mouse
Recommended dilutions	Immunohistochemistry:1/200 <b>NOTE: Optimal dilutions should be determined by the end user.</b>
Immunogen	Synthetic Peptide
Species	Human
Storage	PBS with 0.02% sodium azide and 50% glycerol pH 7.4. Store at -20° C. Avoid repeated freeze-thaw cycles.
Isotype	IgG1
Clonality	Monoclonal
Concentration	1 mg/ml
Observed band	51kDa
GeneID (Human)	3868
Human Swiss-Prot No.	P08779
Cellular localization	Intermediate filament
Alternative Names	Cytokeratin6 K16 K1CP keratin6 KRT16 KRT16A NEPPK
Background	Keratin6 is expressed in keratinocytes which are undergoing rapid turnover in the suprabasal region (also known as hyperproliferation-related keratins). Keratin6 is absent in normal breast tissue and in noninvasive breast carcinomas. Only0% of the invasive breast carcinomas show diffuse or focal positivity. Reportedly a relatively high concordance was found between the carcinomas immunostaining with the basal cell and the hyperproliferation-related keratins but not between these markers and the proliferation marker Ki-67. This supports the conclusion that basal cells in breast cancer may

show extensive proliferation and that absence of Ki-67 staining does not mean that (tumor) cells are not proliferating.



IHC staining of human gullet cancer tissue with CK16 mouse mAb(6F6) diluted at:200.