



# ELK Biotechnology

CD41/Integrin  $\alpha$  /2b Mouse mAb

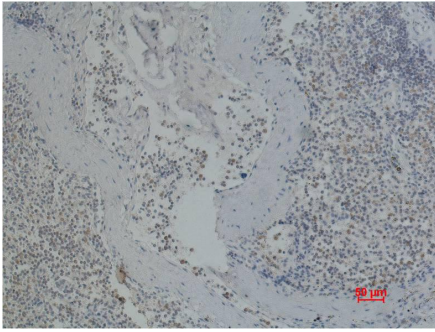
Catalog NO.: EM1106

For research use only.

## Overview

---

Product name	CD41/Integrin $\alpha$ /2b Mouse Monoclonal antibody
Source	Mouse
Applications	IHC
Species reactivity	Human
Recommended dilutions	<b>Immunohistochemistry:1/100-200</b> <b>NOTE: Optimal dilutions should be determined by the end user.</b>
Immunogen	Synthetic Peptide
Species	Human
Storage	PBS with 0.02% sodium azide and 50% glycerol pH 7.4. Store at -20° C. Avoid repeated freeze-thaw cycles.
Isotype	IgG1
Clonality	Monoclonal
Concentration	1 mg/ml
Observed band	N/A
GeneID (Human)	3674
Human Swiss-Prot No.	P08514
Cellular localization	Membrane
Alternative Names	BDPLT2CD41 antigen CD41a gp2b ITGA2B platelet fibrinogen receptor alpha
Background	ITGA2B encodes integrin alpha chain 2b. Integrins are heterodimeric integral membrane proteins composed of an alpha chain and a beta chain. Alpha chain 2b undergoes post-translational cleavage to yield disulfide-linked light and heavy chains that join with beta 3 to form a fibrinogen receptor expressed in platelets that plays a crucial role in coagulation.



Immunohistochemical analysis of paraffin-embedded Human Spleen using CD41 (EM1106) Mouse mAb diluted at:200.