



# ELK Biotechnology

CD25 Mouse mAb

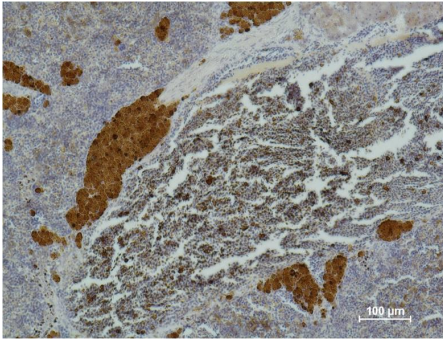
Catalog NO.: EM1107

For research use only.

## Overview

---

Product name	CD25 Mouse Monoclonal antibody
Source	Mouse
Applications	IHC
Species reactivity	Human
Recommended dilutions	<b>Immunohistochemistry:1/200-500</b> <b>NOTE: Optimal dilutions should be determined by the end user.</b>
Immunogen	Synthetic Peptide
Species	Human
Storage	PBS with 0.02% sodium azide and 50% glycerol pH 7.4. Store at -20° C. Avoid repeated freeze-thaw cycles.
Isotype	IgG1
Clonality	Monoclonal
Concentration	1 mg/ml
Observed band	N/A
GeneID (Human)	3559
Human Swiss-Prot No.	P01589
Cellular localization	Membrane
Alternative Names	IL2 receptor alpha Interleukin 2 receptor alpha chain IL 2RA Ly43 p55 TCGFR
Background	CD25 is the alpha chain of the IL-2 receptor. It is a type I transmembrane protein present on activated T cells activated B cells.



Immunohistochemical analysis of paraffin-embedded Mouse Spleen Tissue using CD 25 (EM1107) Mouse mAb diluted at:500.