



# ELK Biotechnology

**Caspase-3 (4B8) Mouse mAb**

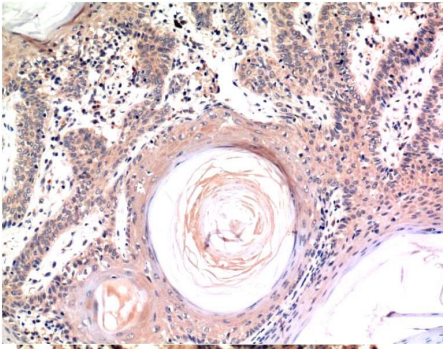
**Catalog NO.: EM1266**

**For research use only.**

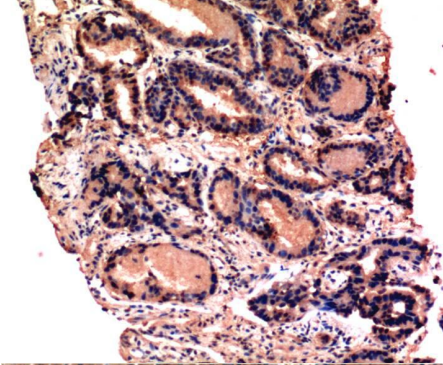
## Overview

---

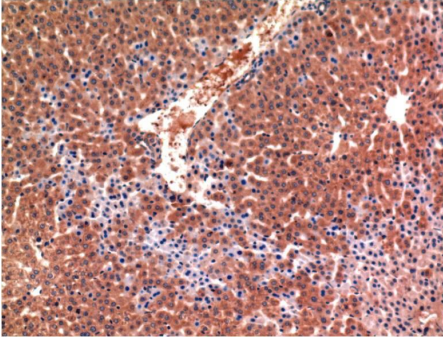
Product name	Caspase-3 (4B8) Mouse Monoclonal antibody
Source	Mouse
Applications	<b>IHC</b>
Species reactivity	<b>Human Rat Mouse</b>
Recommended dilutions	<b>Immunohistochemistry:1/100-200</b> <b>NOTE: Optimal dilutions should be determined by the end user.</b>
Immunogen	Synthetic Peptide
Species	Human
Storage	PBS with 0.02% sodium azide and 50% glycerol pH 7.4. Store at -20° C. Avoid repeated freeze-thaw cycles.
Isotype	IgG1
Clonality	Monoclonal
Concentration	1 mg/ml
Observed band	<b>1732kDa</b>
GeneID (Human)	836
Human Swiss-Prot No.	P42574
Cellular localization	Cytoplasm
Alternative Names	APOPAIN antibody CASP 3 antibody CPP32 antibody Cysteine protease CPP32 antibody
Background	Caspase-3 (CPP-32 Apoptain Yama SCA-1) is a critical executioner of apoptosis and is either partially or totally responsible for the proteolytic cleavage of many key proteins such as the nuclear enzyme poly(ADP-ribose) polymerase (PARP).



Immunohistochemical analysis of paraffin-embedded Human Skin Tissue using Caspase-3 (EM1266) Mouse mAb diluted at:200.



Immunohistochemical analysis of paraffin-embedded Human Prostate Tissue using Caspase-3 (EM1266) Mouse mAb diluted at:200.



Immunohistochemical analysis of paraffin-embedded Mouse Liver Tissue using Caspase-3 (EM1266) Mouse mAb diluted at:200.