



# ELK Biotechnology

## Gamma Tubulin (6C12) Mouse mAb

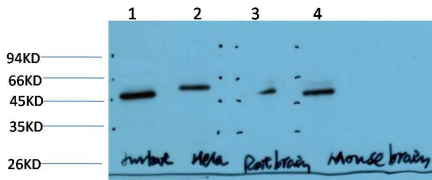
Catalog NO.: EM1302

For research use only.

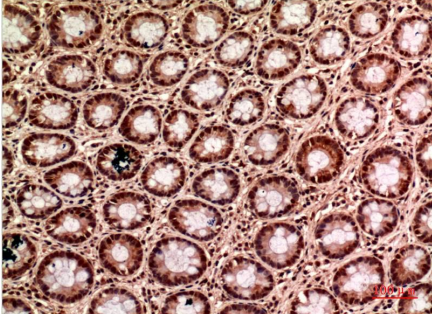
### Overview

---

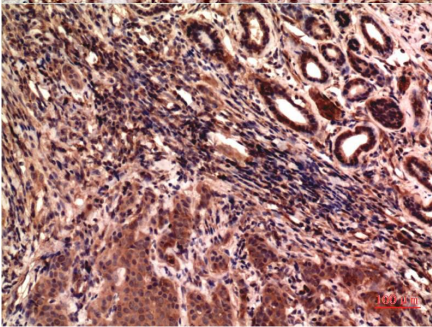
Product name	Gamma Tubulin (6C12) Mouse Monoclonal antibody
Source	Mouse
Applications	<b>WB IHC</b>
Species reactivity	<b>Human Rat Mouse</b>
Recommended dilutions	<b>WesternBlot:1/1000-2000</b> <b>Immunohistochemistry:1/100-200</b> <b>NOTE: Optimal dilutions should be determined by the end user.</b>
Immunogen	Synthetic Peptide
Species	Human
Storage	PBS with 0.02% sodium azide and 50% glycerol pH 7.4. Store at -20° C. Avoid repeated freeze-thaw cycles.
Isotype	IgG1
Clonality	Monoclonal
Concentration	1 mg/ml
Observed band	<b>50kDa</b>
GenelD ( Human )	7283
Human Swiss-Prot No.	P23258
Cellular localization	Cytoplasm Cytoskeleton Microtubule
Alternative Names	$\gamma$ tubulin GCP1 TUBG2
Background	$\gamma$ -tubulin forms complexes of two different sizes: $\gamma$ -tubulin small complex ( $\gamma$ -TuSC) and the larger $\gamma$ -tubulin ring complex ( $\gamma$ -TuRC).



Western blot analysis of 1) Jurkat Cell Lysate 2) HeLa Cell Lysate 3) Rat Brain Tissue Lysate 4) Mouse Brain Tissue Lysate using Gamma Tubulin (EM1302) Mouse mAb diluted at:2000.



Immunohistochemical analysis of paraffin-embedded Human Colon Carcinoma Tissue using Gamma Tubulin (EM1302) Mouse mAb diluted at:200.



Immunohistochemical analysis of paraffin-embedded Human Breast Carcinoma Tissue using Gamma Tubulin (EM1302) Mouse mAb diluted at:200.