



ELK Biotechnology

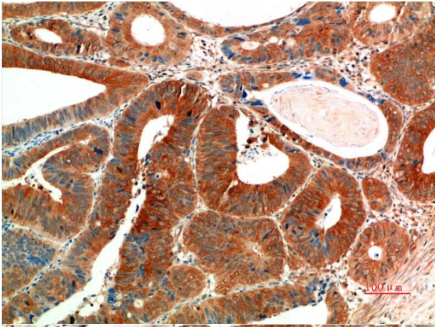
Phospho-ERK/2 (Y205/222) (7A6) Mouse mAb

Catalog NO.: EM1342

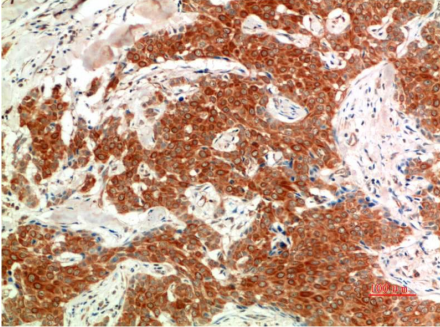
For research use only.

Overview

Product name	Phospho-ERK/2 (Y205/222) (7A6) Mouse Monoclonal antibody
Source	Mouse
Applications	IHC
Species reactivity	Human Mouse Rat
Recommended dilutions	Immunohistochemistry:1/100-200 NOTE: Optimal dilutions should be determined by the end user.
Immunogen	Synthetic Peptide
Species	Human
Storage	PBS with 0.02% sodium azide and 50% glycerol pH 7.4. Store at -20° C. Avoid repeated freeze-thaw cycles.
Isotype	IgG1
Clonality	Monoclonal
Concentration	1 mg/ml
Observed band	4442kDa
GeneID (Human)	5594/5595
Human Swiss-Prot No.	P27361/P28482
Cellular localization	Nucleus
Alternative Names	MAPK Mitogen-activated protein Kinase PRKM2MK01
Background	Mitogen-activated protein kinases (MAPKs) are a widely conserved family of serine/threonine protein kinases involved in many cellular programs such as cell proliferation differentiation motility and death. The p44/42 MAPK (Erk1/2) signaling pathway can be activated in response to a diverse range of extracellular stimuli including mitogens growth factors and cytokines and is an important target in the diagnosis and treatment of cancer.



Immunohistochemical analysis of paraffin-embedded Human Colon Carcinoma Tissue using Phospho-ERK1/2 (EM1342) Mouse mAb diluted at:200.



Immunohistochemical analysis of paraffin-embedded Human Breast Carcinoma Tissue using Phospho-ERK1/2 (EM1342) Mouse mAb diluted at:200.